

Pneumatic Shockwave

Pain Relief Device Smartwave Shock Wave Therapy

New Air Pressure Shock Wave

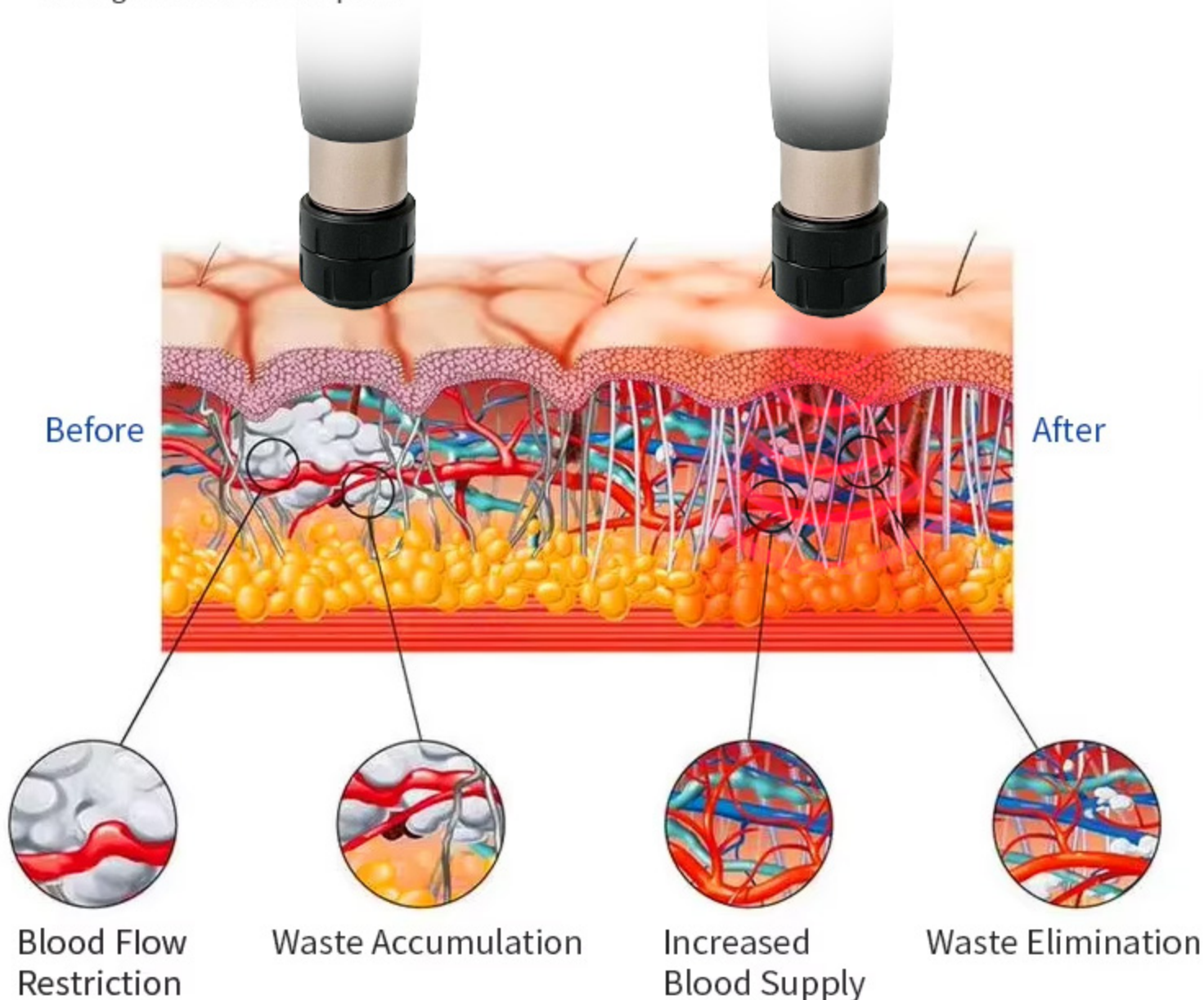
- Physiotherapy massage
- Intelligent adjustment
- Relieve pain points
- Pain point blow



Working Theory



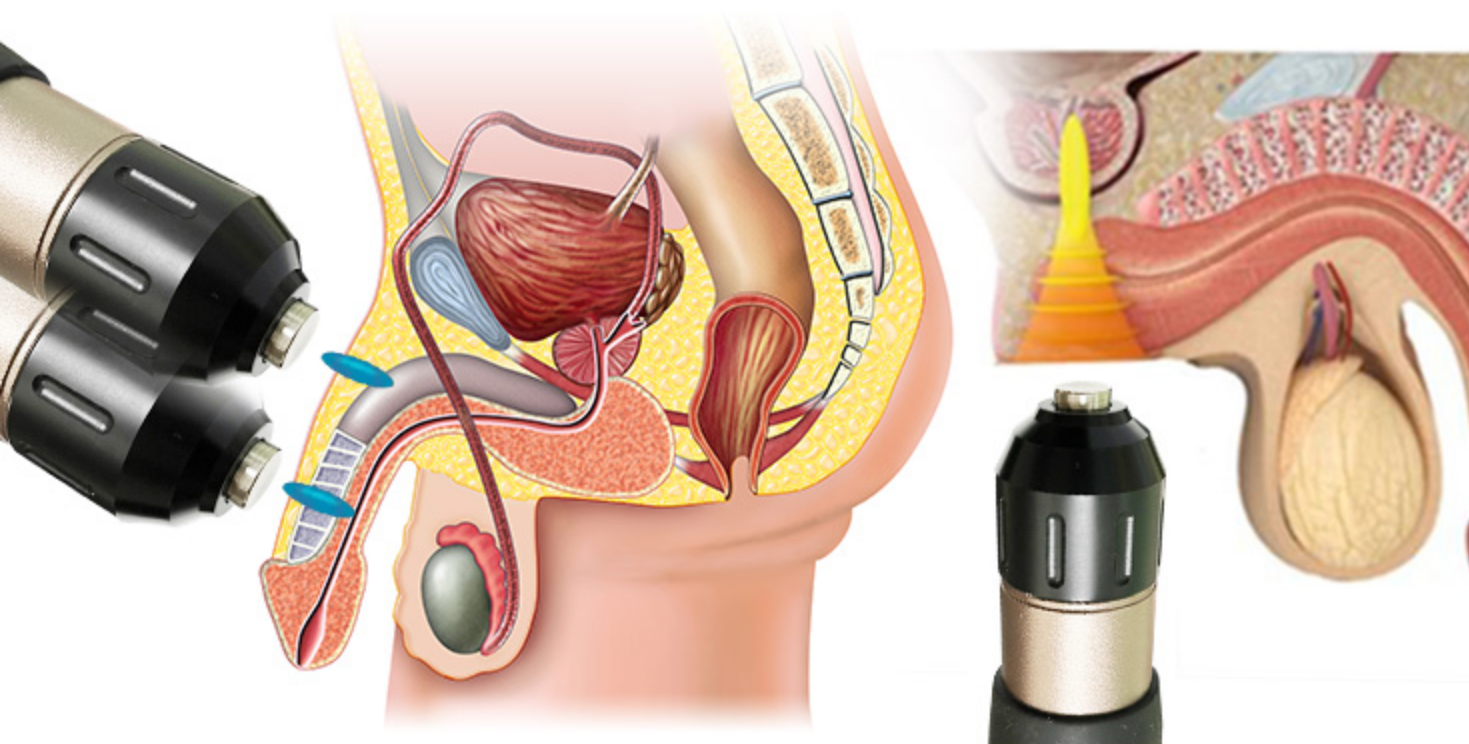
Shockwave therapy is a multidisciplinary device used in orthopaedics, physiotherapy, sports medicine, urology and veterinary medicine. Its main assets are fast pain relief and mobility restoration. Together with being a non-surgical therapy with no need for painkillers makes it an ideal therapy to speed up recovery and cure various indications causing acute or chronic pain.



Shock Wave ED Therapy

Most men suffering from erectile dysfunction have vascular problems affecting the vessels that supply blood to the cavernous bodies of the penis, resulting in a decreased ability to develop and maintain an erection.

Shockwave Therapy for ED of this type can be a highly effective treatment. The shockwaves are focused onto the area to be treated creating new blood vessels in penile tissue, enabling patients to achieve and maintain firm spontaneous erections.



ED Therapy Protocol

1. Target to spongy tissue in 5 different areas.
2. 300 impacts per areas, total 1500 impacts in one treatment.
3. Twice a week, treat consistently for 3 weeks, then stop for 3 weeks. And start next course.
4. Should be more impacts at the top end of penis and less impacts at the bottom of penis.



Product Parameter



Power

200W

Energy

0.5 - 8 Bar

Frequency

1- 21Hz

Shots times

2 million times

Screen

8-inch touch screen

Input Voltage

AC 100V-240V 50Hz-60Hz

Treated Heads

**7 pcs including radial form,
focus form and flat form**

Packing Size

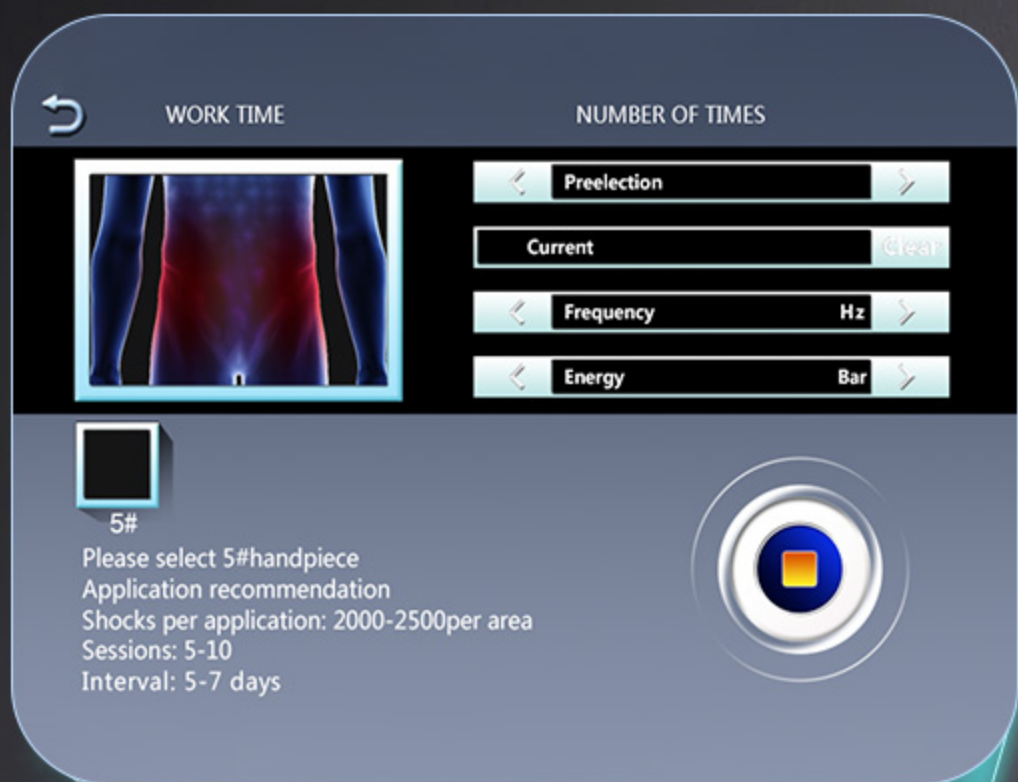
58*46*38cm

Parts Introduction



8 inch touch screen

The operation interface is simple and easy to understand and easy to master



Waiting...

Language Settings

中文

English

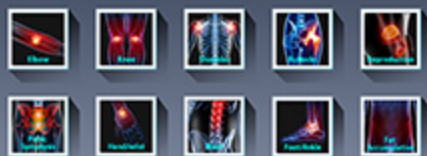
Password Settings

Please enter a new password

Please enter the new password again

0 1 2 3 4 5 6 7 8 9 Confirm

Shockwave system ver:1.1



System settings

WORK TIME NUMBER OF TIMES

Preselection ☒
 Current ☐
 Frequency ☒ Hz
 Energy ☒ Bar

28 38

Please select 2for3handpiece
Application recommendation
Shocks per application: 2000-2500per area
Sessions: 5-10
Interval: 5-7 days

WORK TIME NUMBER OF TIMES

Preselection ☒
 Current ☐
 Frequency ☒ Hz
 Energy ☒ Bar

38 48

Please select 3for4handpiece
Application recommendation
Shocks per application: 2000-2500per area
Sessions: 5-10
Interval: 5-7 days

WORK TIME NUMBER OF TIMES

Preselection ☒
 Current ☐
 Frequency ☒ Hz
 Energy ☒ Bar

48 58

Please select 4for5handpiece
Application recommendation
Shocks per application: 2000-2500per area
Sessions: 5-10
Interval: 5-7 days

WORK TIME NUMBER OF TIMES

Preselection ☒
 Current ☐
 Frequency ☒ Hz
 Energy ☒ Bar

48 58

Please select 4for5handpiece
Application recommendation
Shocks per application: 2000-2500per area
Sessions: 5-10
Interval: 5-7 days

WORK TIME NUMBER OF TIMES

Preselection ☒
 Current ☐
 Frequency ☒ Hz
 Energy ☒ Bar

18 28

Please select 1for2handpiece
Application recommendation
Shocks per application: 2000-2500per area
Sessions: 5-10
Interval: 5-7 days

WORK TIME NUMBER OF TIMES

Preselection ☒
 Current ☐
 Frequency ☒ Hz
 Energy ☒ Bar

18 28

Please select 1for2handpiece
Application recommendation
Shocks per application: 2000-2500per area
Sessions: 5-10
Interval: 5-7 days

WORK TIME NUMBER OF TIMES

Preselection ☒
 Current ☐
 Frequency ☒ Hz
 Energy ☒ Bar

48 58

Please select 4for5handpiece
Application recommendation
Shocks per application: 2000-2500per area
Sessions: 5-10
Interval: 5-7 days

WORK TIME NUMBER OF TIMES

Preselection ☒
 Current ☐
 Frequency ☒ Hz
 Energy ☒ Bar

58

Please select 5handpiece
Application recommendation
Shocks per application: 2000-2500per area
Sessions: 5-10
Interval: 5-7 days

WORK TIME NUMBER OF TIMES

Preselection ☒
 Current ☐
 Frequency ☒ Hz
 Energy ☒ Bar

58

Please select 5handpiece
Application recommendation
Shocks per application: 2000-2500per area
Sessions: 5-10
Interval: 5-7 days

Warning
Handle not inserted

7 precision replaceable probes

Flat radial focus waveforms

Flat form
6/10/15/20mm

Focus form
40mm

Radial form
25/30mm



6mm

10mm

15mm

20mm

25mm

30mm

40mm

- Flat form: Direct impact on the body parts
- Focus and Radial Form: The focus form is deep self-focusing, and the radial form is the middle layer focusing
- The focus form can speed up the wave energy and focused on the treated body part. The radial form can spread the shock wave evenly and the treated area is larger

Shock Wave Replace The Head (7 pc)

Easy to assemble



Chest pain

For chest muscle groups



Pubic Symphysis

For pain treatment



Arm/elbow

Arthritis, muscle pathology



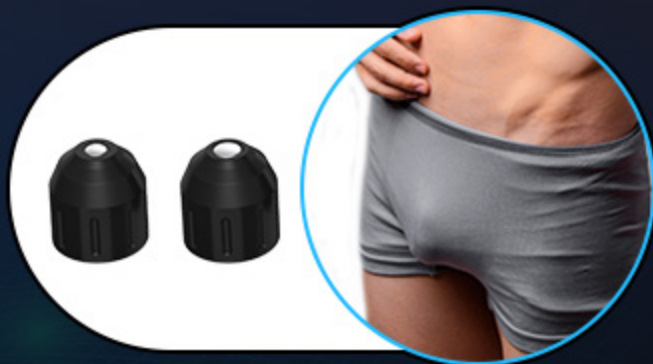
Waist/Back

Bone healing and remodeling



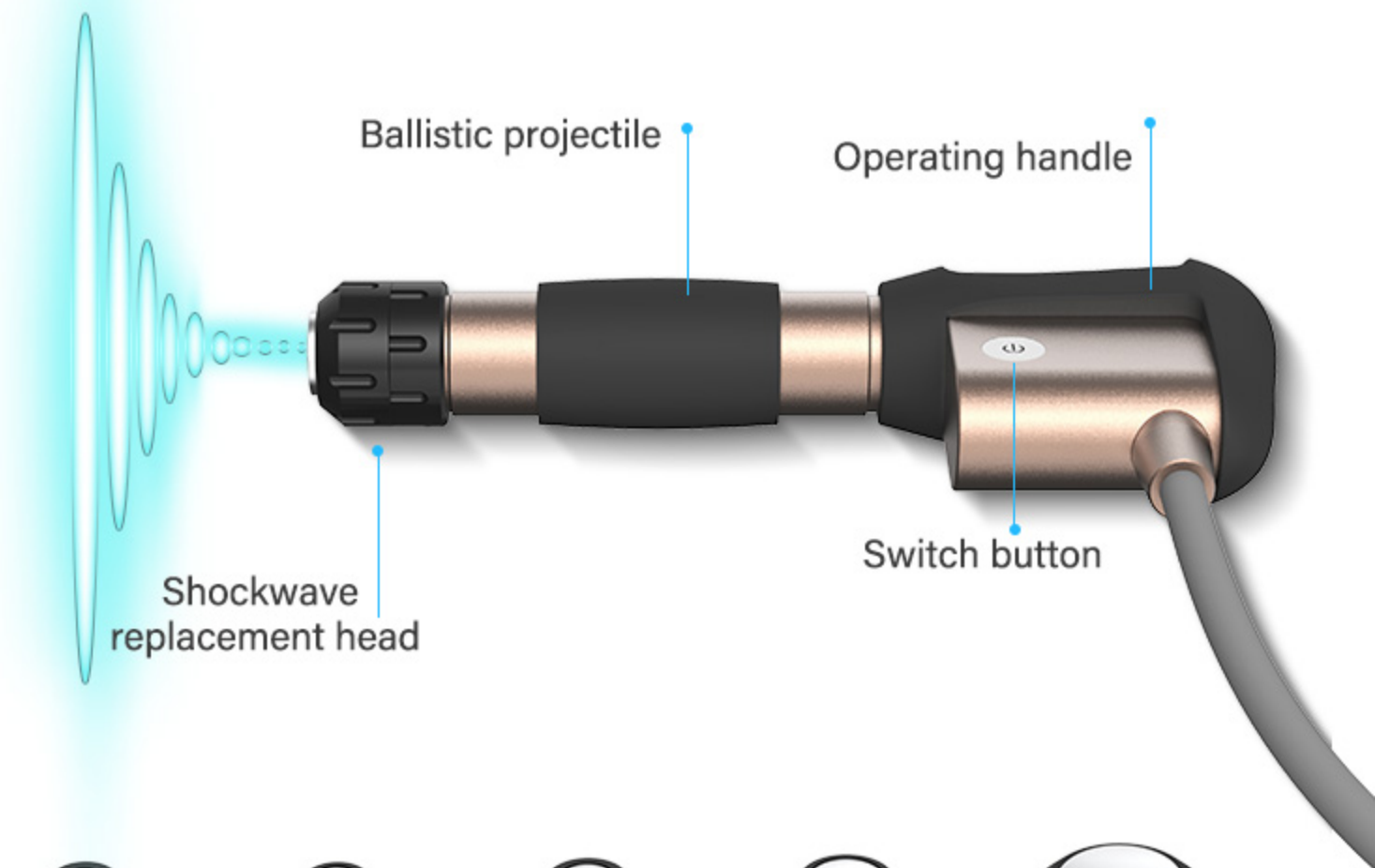
knee pain

Knee joint wear



ED handle

Treating erectile dysfunction



1#



2#



3#



4#



5#



6#



7#

1 # Working head diameter= 6mm

2 # Working head diameter= 10mm

3 # Working head diameter= 15mm








4 # Working head diameter= 20mm

5 # Working head diameter= 25mm

6 # Working head diameter= 30mm

7 # Working head diameter= 40mm

Shockwave for Physiotherapy: Shockwave therapy is a multidisciplinary device used in orthopaedics, physiotherapy, sports medicine, urology and veterinary medicine. Its main assets are fast pain relief and mobility restoration. Together with being a non-surgical therapy with no need for painkillers makes it an ideal therapy to speed up recovery and cure various indications causing acute or chronic pain.

Shockwave head	size	Penetration depth /waveform	
1 # 	Φ 6mm	Radial 0-40mm	0.32mj/mm ²
2 # 	Φ 10mm	0-60mm	0.63mj/mm ²
3 # 	Φ 15mm	0-60mm	0.63mj/mm ²
4 # 	Φ 20mm	0-50mm	0.48mj/mm ²
5 # 	Φ 25mm	Cylindric 0-50mm	0.48mj/mm ²
6 # 	Φ 30mm	Cylindric 0-50mm	0.46mj/mm ²
7 # 	Φ 40mm	Cylindric 0-60mm	0.46mj/mm ²

Maximum energy density under pressure

Pneumatic Shockwave

Pain relief treatment



Muscle pathology,
epicondylitis, tendinitis,
arthritis



Effect on nitrogen oxide
system: Bone healing
and remodeling.



Improve blood
circulation,
Analgesic effect

Shock Wave Therapy



New Air Pressure Shock Wave

Pneumatic Shockwave

System with professional treatment parameters and suggestions

Physical Therapy

Rehabilitation

Pain Management

Decrease abdominal and body fat

ED treatment (Shock wave)



Pneumatic Shockwave

Stimulates tissue cell regeneration and
heals erectile dysfunction (ED).



Special ED heads

For Men

Before

After

VS

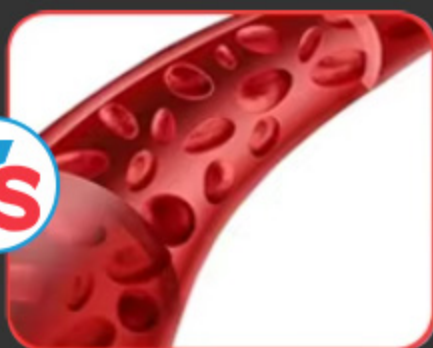


Vascular Regeneration

Promotes the release of growth factors, inducing the growth of new blood vessels locally.

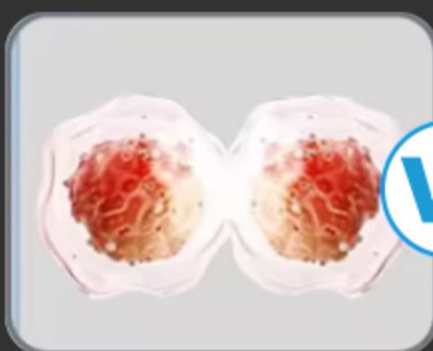


VS



Improved Blood Supply

Accelerates blood flow, increases blood volume, and enhances blood circulation.

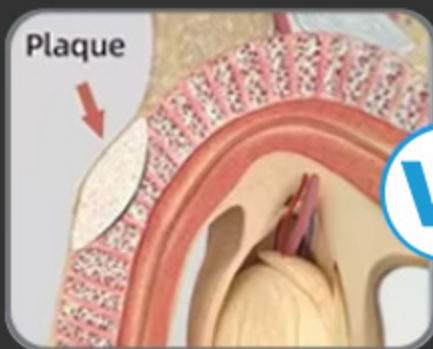


VS



Tissue Repair

Stimulates cells and the release of growth factors, encouraging cell growth and differentiation.



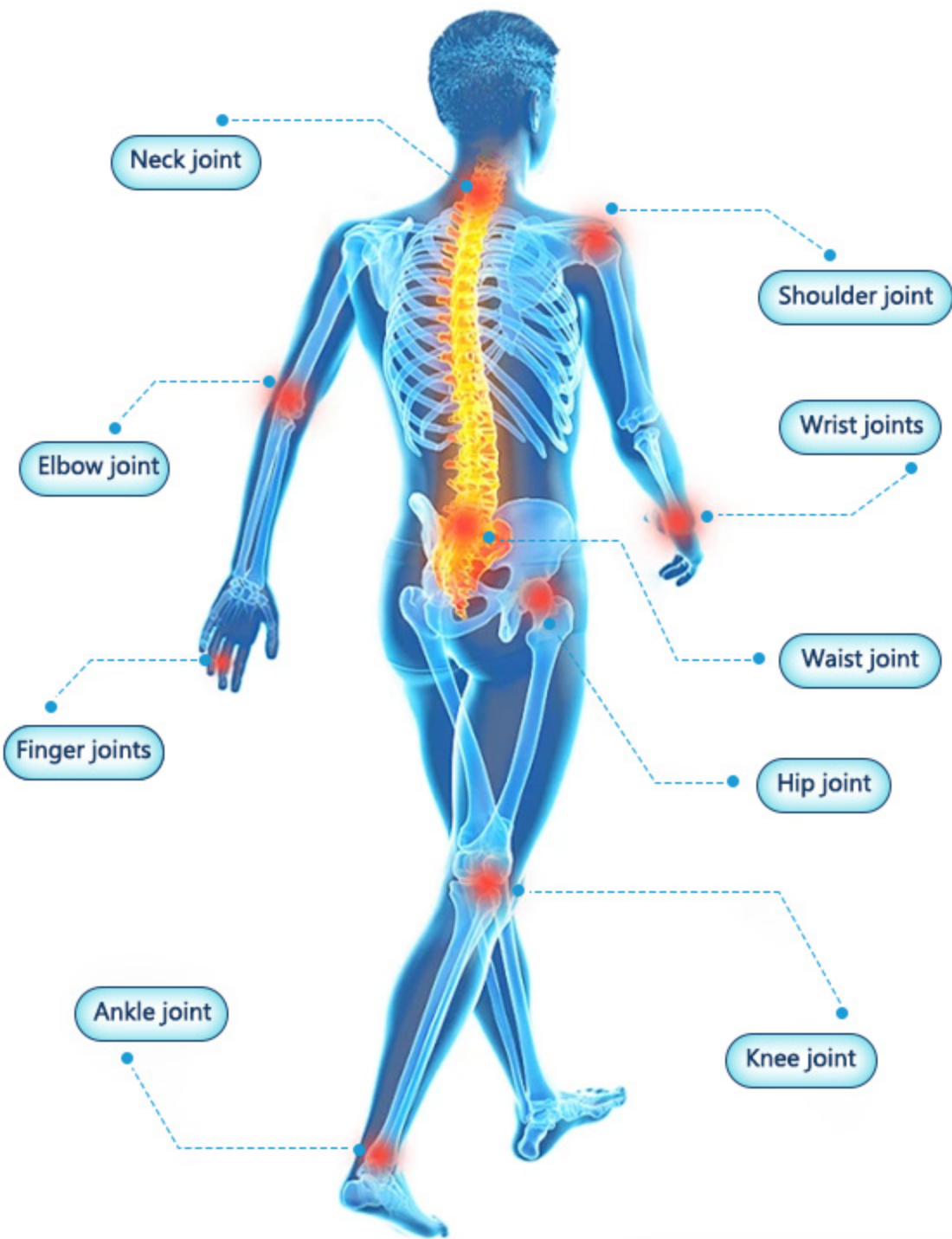
VS



Plaque Removal

Eliminates local hardened plaques, softens tissue, and alleviates pain.

Product Application



Product Function



ADVANTAGES

- ✓ 7 pcs shock wave replacement heads, easy to assemble
- ✓ 8-inch high-definition LED touch screen, easy to operate and understand
- ✓ Function: Sports Injury Recovery, Rehabilitation Therapy, Physiotherapy Pain Relief, Reduce Cellulite, With ED treatment.
- ✓ By the targeted application of the shockwaves, stress to the surrounding tissues is quite insignificant.

